



Beaufort County Public Works Stormwater Infrastructure Project Summary

Project Summary: St Pauls Church Road/Josephine Drive

Activity: Routine/Preventive Maintenance

Narrative Description of Project:

Project improved 6,043 L.F. of drainage system. Cleaned out 6,019 L.F. of roadside ditch. Replaced 24 L.F. of driveway pipe. Jetted (2) access pipes, (4) crossline pipes and (15) driveway pipes.

Completion: Jan-16

2016-545 / St Pauls Church Rd/Josephine Dr	Labor Hours	Labor Cost	Equipment Cost	Material Cost	Contractor Cost	Indirect Labor	Total Cost
ASBUILT / Asbuilt - Project	16.0	\$363.78	\$30.06	\$8.50	\$0.00	\$223.50	\$625.84
AUDIT / Audit Project	1.0	\$23.49	\$0.00	\$0.00	\$0.00	\$13.23	\$36.72
CLPJT / Crossline Pipe - Jetted	32.0	\$732.16	\$138.88	\$53.27	\$0.00	\$475.20	\$1,399.51
DPJT / Driveway Pipe - Jetted	52.0	\$1,190.28	\$225.68	\$91.54	\$0.00	\$772.62	\$2,280.12
DPRPL / Driveway Pipe - Replaced	50.0	\$1,121.20	\$85.29	\$161.95	\$0.00	\$698.10	\$2,066.54
HAUL / Hauling	202.0	\$4,498.54	\$1,534.08	\$766.26	\$0.00	\$2,912.84	\$9,711.72
HYDR / Hydroseeding	16.0	\$356.52	\$51.48	\$507.56	\$0.00	\$221.88	\$1,137.44
ONJV / Onsite Job Visit	73.0	\$2,324.19	\$249.73	\$59.50	\$0.00	\$1,452.73	\$4,086.14
RSDCL / Roadside Ditch - Cleanout	526.0	\$11,925.68	\$1,842.79	\$422.20	\$0.00	\$7,529.43	\$21,720.09
TC / Traffic Control - Jobsite	21.0	\$496.89	\$53.10	\$34.39	\$0.00	\$326.43	\$910.81
UC / Utility Coordination	8.0	\$254.81	\$24.86	\$6.80	\$0.00	\$156.57	\$443.04
UTLOC / Utility locates	3.0	\$95.00	\$3.62	\$1.70	\$0.00	\$60.42	\$160.74
2016-545 / St Pauls Church Rd/Josephine Dr Sub Total	1,000.0	\$23,382.53	\$4,239.57	\$2,113.67	\$0.00	\$14,842.95	\$44,578.72
Grand Total	1,000.0	\$23,382.53	\$4,239.57	\$2,113.67	\$0.00	\$14,842.95	\$44,578.72

Before

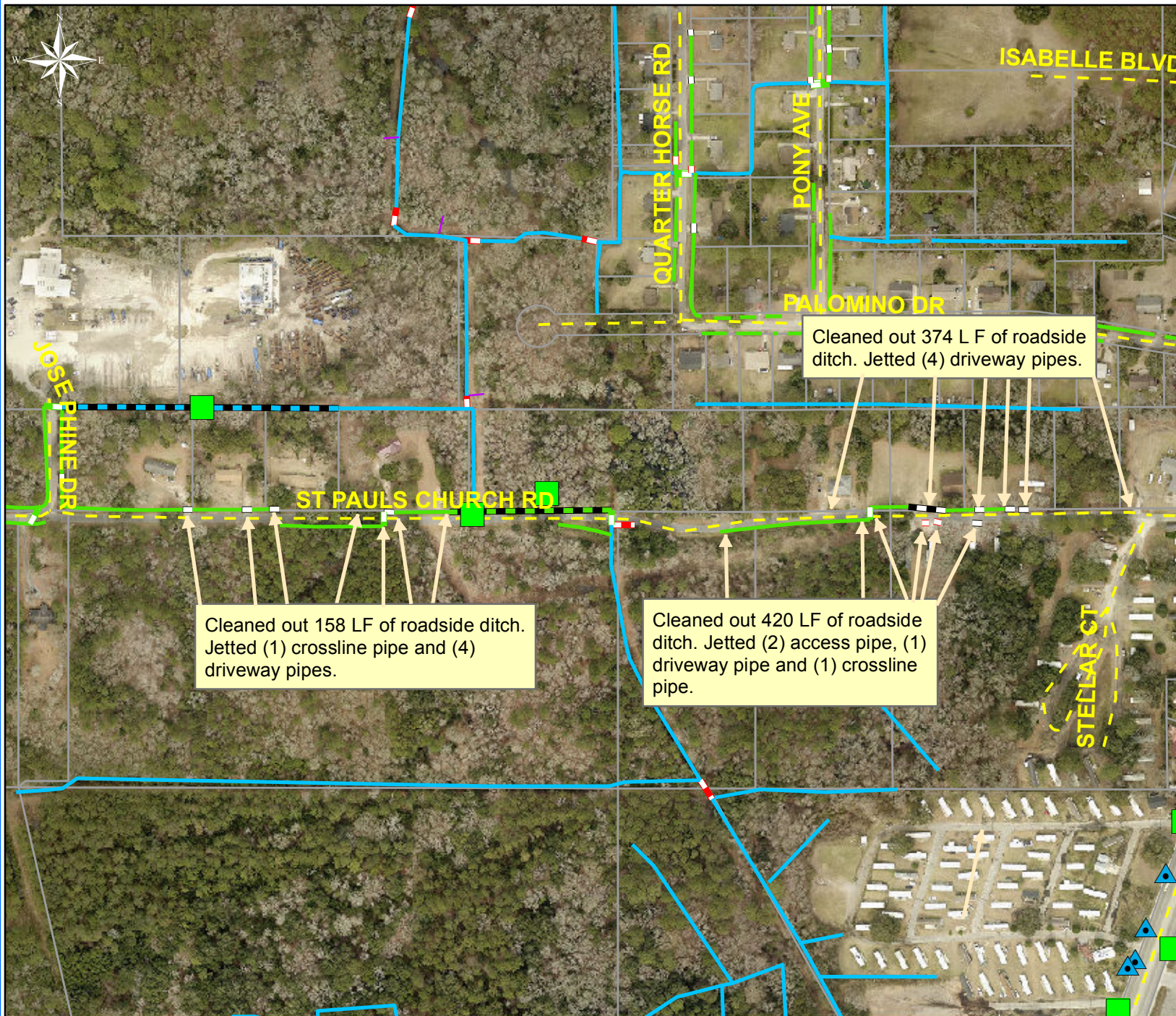


During



After





Project: St Pauls
Church Road/
Josephine Drive
Map 1

Activity: Routine/
Preventive
Maintenance

Project #:
2016-545

Township:
Port Royal Island

Completed:
January 2016

Legend

Drainage Type

- Access Pipe
- Bleeder Pipe
- Channel Pipe
- Channel
- Stream
- Crossline Pipe
- Driveway Pipe
- Lateral
- Lateral Pipe
- River
- Road Pipe
- Roadside
- Roadside Pipe

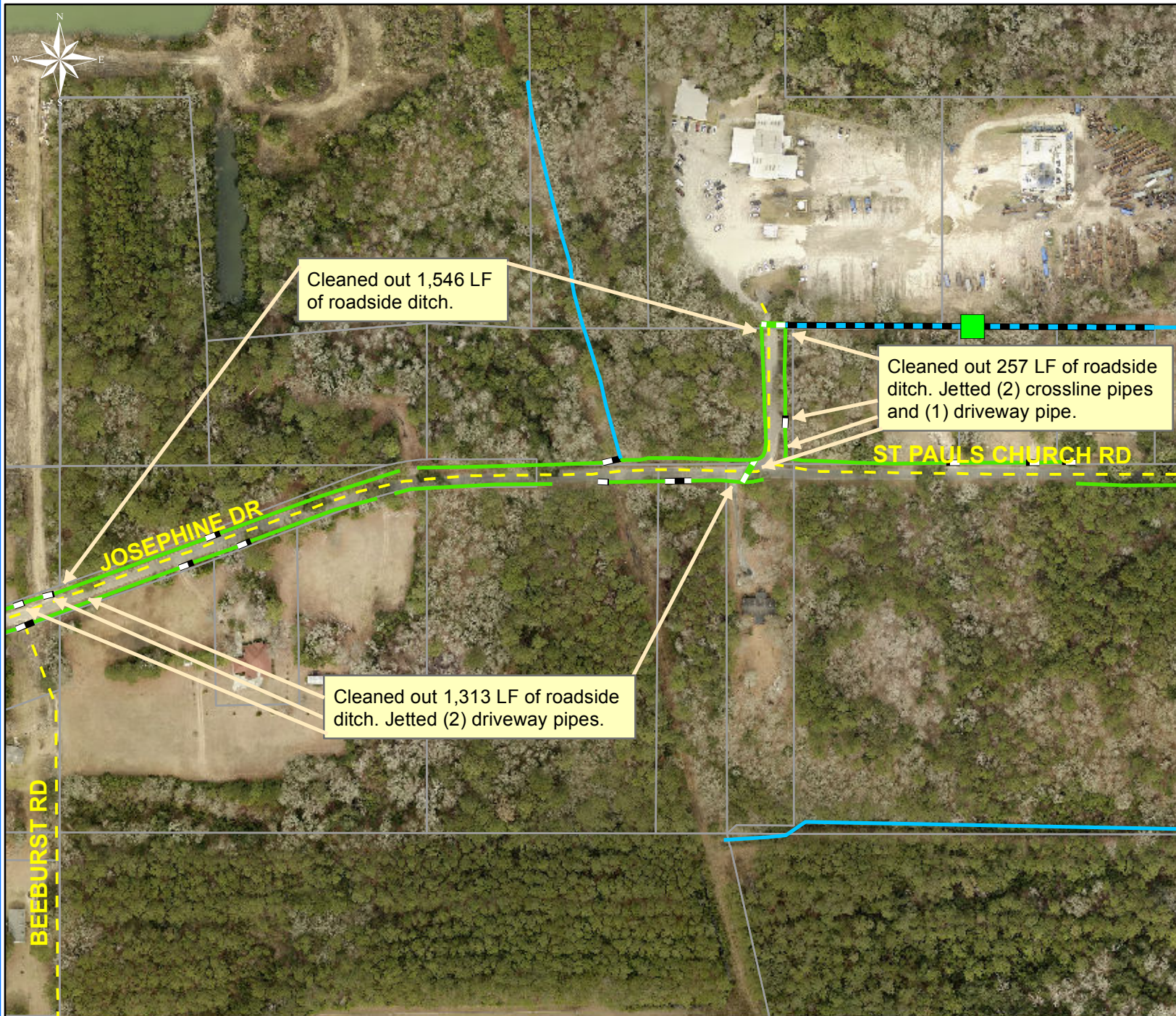
0 80 160 320 480 640
Feet

1 inch = 330 feet

Prepared By: BC Stormwater Management Utility

Date Print: 01/05/16

File: C:\project summaries map\St Pauls Curch Road/Josephine Drive Map 1 2016-545



Project: St Pauls Church Road/ Josephine Drive Map 2

Activity: Routine/ Preventive Maintenance

Project #: 2016-545

Township: Port Royal Island

Completed: January 2016

Legend

Drainage Type

- Access Pipe
- Bleeder Pipe
- Channel Pipe
- Channel
- Stream
- Crossline Pipe
- Driveway Pipe
- Lateral
- Lateral Pipe
- River
- Road Pipe
- Roadside
- Roadside Pipe

0 60 120 240 360 480 Feet

1 inch = 250 feet

Prepared By: BC Stormwater Management Utility

Date Print: 01/05/16

File: C:\project summaries map\St Pauls Church Road/Josephine Drive Map 2 2016-545

Project: St Pauls
Church Road/
Josephine Drive
Map 3

Activity: Routine/
Preventive
Maintenance

Project #:
2016-545

Township:
Port Royal Island

Completed:
January 2016



Legend

Drainage Type

- Access Pipe
- Bleeder Pipe
- Channel Pipe
- Channel
- Stream
- Crossline Pipe
- Driveway Pipe
- Lateral
- Lateral Pipe
- River
- Road Pipe
- Roadside
- Roadside Pipe

0 40 80 160 240 320
Feet

1 inch = 170 feet

Prepared By: BC Stormwater Management Utility

Date Print: 01/05/16

File: C:\project summaries map\St Pauls Curch Road/Josephine Drive Map 3_2016-545